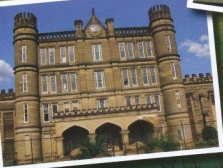
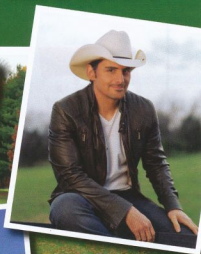
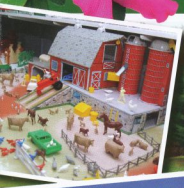


# Marshall county WEST VIRGINIA



Something Different

MARSHALL COUNTY  
CHAMBER OF COMMERCE

609 JEFFERSON AVENUE • MOUNDSVILLE, WV 26041

304-845-2773

FOR ADDITIONAL TOURISM INFORMATION VISIT:

# Marshall County **INDUSTRIES**



AEP - Kammer-Mitchell

Your energy provider &  
community partner.

Moundsville, WV

We don't just power the community,  
we're part of it.

**COAL**

**NATURAL GAS**

 **CONSOL ENERGY.**  
America's On Switch.

[consolenergy.com](http://consolenergy.com)



**NATRIUM PLANT**

*QUALITY CHEMICALS  
FOR THE WORLD...*

*QUALITY LIFE FOR THE  
OHIO VALLEY*

**PPG INDUSTRIES, INC.**  
P.O. BOX 191  
NEW MARTINSVILLE, WV  
26155



# Welcome

As the majestic Ohio River carved its path from north to south, it formed along its banks the unsurpassed splendor that is Marshall County, WV. Situated against a backdrop of rolling hills, Marshall County offers both beauty and adventure to the thrill seeking as well as the easygoing.

For those seeking the tranquil beauty of the great outdoors, Marshall County is sure to please. Fish or boat along the lazy waters of the Ohio River or view local wildlife while hiking or camping along the countryside. Golfing, swimming and rustic cabins are also available at Grand Vue Park. Relax in the evenings with Music-in-the-Park concerts in the spring and summer or a quiet dinner at one of our many fabulous restaurants.

Discover adventures of past and present throughout the county. Participate in county fairs, shopping, sporting events and more. Climb to the top of the Grave Creek Mound, one of the largest burial mounds built by the Adena people over 2,000 years ago. Experience the eerie Former West Virginia Penitentiary, a gothic-style fortress built shortly after the Civil War. You cannot miss touring The Original Marx Toy Museum where thousands of toys are on display that were manufactured locally including the original Big Wheel. Visit the Fostoria Glass Museum and see 37,000 different pieces of glassware on display from nearly 100 years of company existence. Enjoy a thrilling evening in nearby Wheeling with live performances at the Capitol Theatre or betting and gaming at Wheeling Island Hotel-Casino-Racetrack.

Whatever your preference, Marshall County has an adventure to suit your pace. For more information, call the Chamber of Commerce at 304-845-2773 or visit us at: [www.marshallcountychamber.com](http://www.marshallcountychamber.com) or [www.marshallcountytourism.com](http://www.marshallcountytourism.com)

ATTRACTIONS .....	4
EVENTS.....	6
ENTERTAINMENT.....	8
SHOPPING .....	12
MAPS.....	18
DINING.....	20
SERVICES .....	24
COMMUNITY RESOURCES.....	26
CHURCHES.....	28

Information in this publication is believed to be accurate at the time of printing; however, we suggest that you check in advance to confirm specific details.

# Attractions

## **Cockayne Farmstead**

1111 Wheeling Avenue, Glen Dale  
304-845-1411

Frozen in time! Step into a time capsule as you visit the Cockayne Farmstead! This 12-room farmhouse was home to 4 generations of the Cockayne family between 1850 and 2001. Contains hundreds of family furnishings, pictures, documents and paintings from that period. Call for tour information and pricing. Gift Shop.

## **Former West Virginia Penitentiary**

818 Jefferson Avenue, Moundsville  
304-845-6200  
[www.wvpentours.com](http://www.wvpentours.com)

Experience "Life on the Inside" in this 10-acre Civil War era maximum security Prison. Open April through November and by appointment December through March. 90-minute guided tours. Open for daily tours Tuesday through Sunday, 11 a.m. - 4 p.m. Group tours, night tours and ghost hunts available. Operated and maintained for the public by the Moundsville Economic Development Council.

## **Fostoria Glass Museum**

511 Tomlinson Avenue, Moundsville  
304-845-9188

Dedicated to preserving the history of Fostoria Glass Historic Home with two floors of Fostoria glass. Convention and Auction, 2nd weekend in June. Open March thru November, Wednesday thru Saturday 1-4 pm. Memberships are available. Group tours welcome. Free parking. Handicap accessible.

## **Grave Creek Mound Archaeology Complex**

801 Jefferson Avenue, Moundsville  
(800) CALLWA or 304-843-4128

Visit and explore one of the largest conical mounds built during the Adena Period. Adjacent to the Mound is the Delf Norona Museum which features artifacts, exhibits, gift shop and a theatre. Open Monday-Saturday 10 a.m. to 4:30 p.m. Sunday 1 to 5:00 p.m. Closed Holidays. A national Historic Landmark. On the web at [www.wvculture.org](http://www.wvculture.org).

## **Marshall County Historical Society Museum**

13th Street and Lockwood Avenue, Moundsville  
304-845-1411

A collection of artifacts relating to the history of Marshall County as well as a complete genealogy room. Call for tour information by appointment.



### **The Official Marx Toy Museum**

915 Second Street, Moundsville

304-845-6022

[www.marxtoymuseum.com](http://www.marxtoymuseum.com)

As seen on the Travel Channel and in national magazines, The Official Marx Toy Museum displays thousands of Marx toys from the 1920s through 1980...all in a vintage 1950s décor, complete with Gift Shop and Snack Area, and all 100% Handicap Accessible! Take a walk down memory lane!

### **Prabhupada's Palace of Gold: America's Taj Mahal**

In New Vrindabin Community WV

South of Moundsville—Wheeling off Route 250

304-843-1812

[www.palaceofgold.com](http://www.palaceofgold.com)

The Palace features fifty varieties of marble and onyx, an antique French chandelier with rare Marie Antoinette crystals, and hand-carved teak wood furniture. Outside, there is a lotus flower pond, an award-winning rose garden, live peacocks, and a gift shop with many imported delights. There is ample parking space and wheelchair support.

### **Roseby's Rock**

Historic Home of Dorothy Dakan Sedosky

304-845-2701

### **The Strand Theatre**

804 Fifth Street, Moundsville

304-845-0670

[www.strandtheatrewv.com](http://www.strandtheatrewv.com)

Mission: Restore the Strand and Build the Arts

The Strand, built in 1920 as a Vaudeville Theater, served as a venue for live plays and variety shows and later brought to life the stars of the silver screen. The theatre closed in 1996. Volunteers have organized a non-profit organization, restored the exterior and began interior renovation. Restoration has been possible with the help of the West Virginia Division of Culture & History, US Federal Housing & Urban Development and local businesses and individuals' contributions. Although the grand curtain raising has not occurred, you can schedule tours of this historic facility.



# Events

## JANUARY

**Gun Show at Marshall County Fairgrounds**  
Eastern Twelfth Street  
Moundsville  
304-845-2773

## MARCH

**Craft Show at Marshall County Fairgrounds**  
Eastern Twelfth Street  
Moundsville  
304-845-8659

**Gun Show at Marshall County Fairgrounds**  
Eastern Twelfth Street  
Moundsville  
304-845-8659

**Marshall County Student Art Show at Grave Creek Mound**  
801 Jefferson Avenue  
Moundsville  
304-843-4128

**Quilt Show at The Barn**  
Eastern Fourth Street  
Moundsville  
304-843-1170

**TSA Spring Craft Show at John Marshall High School**  
Wheeling Avenue  
Glen Dale  
304-843-4444

## APRIL

**Marshall County Chamber Home Show & Business Expo**  
Marshall County Fairgrounds  
Eastern Twelfth Street  
Moundsville  
304-845-8659

## MAY

**Mock Prison Riot**  
901 8th Street  
Moundsville  
304-843-4147

## JUNE

**Chamber Corporate Golf Tournament**  
Moundsville County Club  
State Route 2  
Moundsville  
304-845-2773

**Cruisin' Street Spectacular Car Show**  
304-845-2773

**Music-in-the-Park Concerts**  
Riverfront Park  
Moundsville  
Second and Fourth Fridays  
304-845-2773

**Marshall County Chamber Chocolate Jubilee**  
Grand Vue Park Banquet Building  
304-845-9810  
304-845-2773

**Fostoria Glass Society Convention**  
6th at Tomlinson Aveue  
Moundsville  
304-845-9188

## JULY

**Moundsville Independence Day Celebration**  
304-845-6300

**Cameron Independence Day Celebration**  
304-686-2366

**Music-in-the-Park Concerts**

Riverfront Park  
Moundsville  
(Second and Fourth Fridays)  
304-845-2773

**Marshall County Fair**

Eastern Twelfth Street  
Moundsville  
304-845-8659

**AUGUST****Marshall County Fair**

Eastern Twelfth Street  
Moundsville  
304-845-8659

**Music-in-The Park Concerts**

Riverfront Park  
Moundsville  
Second Friday  
304-845-2773

**SEPTEMBER****Elizabethtown Festival**

818 Jefferson Avenue  
Moundsville  
304-845-1411

**Bass Tournament**

(NW Federation)  
Riverfront Park  
Moundsville  
304-845-7660

**March for Mutts**

MC Animal Rescue League  
Former Penitentiary  
Jefferson Avenue  
Moundsville  
304-845-6306

**OCTOBER****Archaeology Weekend**

Grave Creek Mound  
Jefferson Avenue  
Moundsville  
304-845-2646

**Gun Show at Fairgrounds**

Eastern Twelfth Street  
Moundsville  
304-845-8659

**St. Jude Fall Craft Show**

Jefferson Avenue  
Glen Dale  
304-845-2646

**Dungeon of Horrors at  
the Penitentiary**

Every Weekend  
Jefferson Avenue  
Moundsville  
304-845-6200

**NOVEMBER****Tree Gala Light-up Night**

801 Jefferson Avenue  
Moundsville  
304-845-2773

**Christmas Tree Gala Auction**

Grave Creek Mound  
Jefferson Avenue  
Moundsville  
304-845-2773

**Marshall County Chamber of  
Commerce Christmas Parade**

Moundsville  
304-845-2773

**DECEMBER****City of Cameron****Christmas Parade**

304-686-2366

**Craft Show at Fairgrounds**

Eastern Twelfth Street  
Moundsville  
304-845-8659

# Entertainment

## Grand Vue Park

Moundsville, 304-845-9810

Enjoy golf, miniature golf, swimming, hiking, biking, cross-country skiing and more! Vacation cabins available. Open year-round. See ad on back cover for more information.

## Oglebay Resort & Conference Center

Route 88 North, Wheeling, 800-624-6988

Lodge, spa, cottages, golf and zoo

[www.oglebay-resort.com](http://www.oglebay-resort.com)

*The Official*

## Marx Toy Museum



**Preserving the Toys, the History, and  
the Memories of Louis Marx & Co.**

*Thousands of Toys on Display Including...*

Hundreds of Playsets, Metal Toys, Wind-Ups, Trains, Dollhouses,  
Service Stations, Johnny West, Big Wheels, Prototypes, and More!

*Near Marx Factory! Vintage 50's Décor!*



**Take A Walk Down Memory Lane...**

915 Second Street, Moundsville, WV 26041

(304) 845-6022 • Call for Hours!

[www.MarxToyMuseum.com](http://www.MarxToyMuseum.com)



Unique Shopping ♦ Casual Dining ♦ Remarkable Treasures



**And find out what you  
may have been missing!**

Downtown shopping at it's finest -  
friendly faces and personal service

**Come and shop outside "the box" in Moundsville**

- Alexander's on 7th • Allen's Bootery • The Appliance Connection
- Country Lane Crafts & Antiques • Fay's Jewelry • Marx Toy Museum
- New Horizon Consulting • Our Place • Remke Helping Hands • Ruttenberg's
- Steve's Gym • Theresa's Fabrics • Uniquely Yours • Whipkey Heating & Air

Moundsville Business & Cultural District ♦ Moundsville, WV

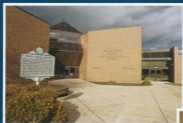
[www.DiscoverMoundsville.com](http://www.DiscoverMoundsville.com)



# Come... Discover Our Story

## GRAVE CREEK MOUND ARCHAEOLOGICAL COMPLEX

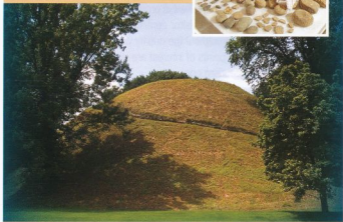
*features the largest conical burial mound  
in the New World and ranks as one of the  
largest mortuary mounds anywhere in the world,  
built by the prehistoric Adena people.*



Featuring exhibits  
and displays in the  
**DEL F NORONA  
MUSEUM**

### **New West Virginia ARCHAEOLOGICAL RESEARCH AND CURATION FACILITY**

*By appointment only*



801 Jefferson Avenue, Moundsville  
Hours: 9 a.m. – 5 p.m. Monday - Saturday  
Noon – 5 p.m., Sunday  
(304) 843-4128 • [www.wvculture.org](http://www.wvculture.org)

West Virginia Division of Culture and History

EEO/AA Employer

# The Chamber



The Marshall County Chamber of Commerce located at 609 Jefferson Avenue in Moundsville West Virginia is responsible for promoting growth by representing the interests and needs of Education, Business and Industry.

The Chamber is extremely involved in promoting tourism in Marshall County. The chamber has 20 visitor centers setup within historic sites and businesses throughout the county where brochures of all tourist stops and other points of interest are available.

[www.marshallcountytourism.com](http://www.marshallcountytourism.com)

The Marshall County Chamber is your information center in Marshall County. Either stop in, call 304-845-2773, email [dknuth@marshallcountychamber.com](mailto:dknuth@marshallcountychamber.com) or [www.marshallcountychamber.com](http://www.marshallcountychamber.com)



## A Yarn Among Friends



yarn • notions • patterns • lessons

[www.agarnamongfriends.com](http://www.agarnamongfriends.com)

254 Jefferson Avenue  
Moundsville, WV 26041

304.810.0217

 Sandy Lample

## Alexander's on 7th

Enjoy the beauty of old world craftsmanship when you visit Moundsville's own "Alexander's on 7th", a National Register property. This "old bank's" signature cafe menu includes fresh ground gourmet coffees and espresso, distinctive luncheon entrees, Friday night dinner selections and all legal beverages...

**"Friendly casual dining on the Avenue - Taste the difference!"**

Evening hours and weekend dates available for private catering.

**All major credit cards accepted - Free parking!**

508 7th Street, Moundsville, WV 26041 • (304) 845-0582

[www.alexanderson7th.com](http://www.alexanderson7th.com)

## Bonnie Dwaine Bed & Breakfast



- Five guest rooms w/private en suite baths/whirlpool, tubs/showers
- Fireplaces
- Gourmet breakfast
- AC - Telephone - TV
- High speed wireless

505 Wheeling Ave., Glen Dale, WV

**Info. 304.845.7250 • Reservations 1-888-507-4569**

[www.bonnie-dwaine.com](http://www.bonnie-dwaine.com) • email: [bonnie@bonnie-dwaine.com](mailto:bonnie@bonnie-dwaine.com)

**OPEN 24 HOURS**

# HUDDLE HOUSE

Located behind Long John Silvers in  
Moundsville, WV

TAKE OUT ORDERS

**304-810-0048**

# Shopping

## **A Yarn Among Friends**

254 Jefferson Avenue, Moundsville, 304-810-0217

## **Allen's Bootery**

337 Jefferson Avenue, Moundsville, 304-845-6360

## **Chey-Nan's Western Tack & More**

Rt. 1 Box 63C, Glen Easton, 304-843-1767, Toll Free 888-584-3726

## **Fay's Jewelry**

323 Jefferson Avenue, Moundsville, 304-845-5960

## **The Gathering Room**

223 Marshall Street, McMechen, 304-344-9808

Located inside Jerry's MiniMart, The Gathering Room has a unique collection of country collectibles for your home or that special gift, including West Virginia gift baskets.

## **Rosebud's Florist & Gifts**

320 Jefferson Avenue, Moundsville, 304-845-8848

Fresh & silk arrangements for all occasions. Large selection of crafts, pictures & giftware, most of your favorite national brand scented candles. Donna Sharp purses, even a few antiques! Something for everyone!

## **Ruttenbergs**

238 Jefferson Avenue, Moundsville, 304-845-1940

Ruttenbergs has been in business since 1930. We specialize in rugged clothing and boots for the working men and women of the Valley. We carry sizes from small to 10XL. We stock a complete line of coal mining clothing and boots. Jeans are our specialty with sizes and styles to fit everyone in your family!

## **Thistledew Farm & Mountain Craft Shop**

RR#1, Box 122 (CR89-Proctor Creek Rd.)

Proctor, WV 26055, 304-455-1728 or 800-85HONEY

[www.thistledewfarm.com](http://www.thistledewfarm.com) - [www.folktoys.com](http://www.folktoys.com)

EDU-TAINMENT! Two great shops in one! Educational and FUN bee farm plus wooden toy shop! Taste comb honey or hot pepper butter. Live beehive (under glass), beeswax candles, cosmetics, soaps, marbles, gifts and MORE! Uncle Bunk's Pickles, Blue Smoke Salsas. 40 miles south of Wheeling. CALL FOR DIRECTIONS AND HOURS.

# Fostoria Glass Museum

*Dedicated to preserving the history of Fostoria Glass  
Historic Home with two floors of Fostoria Glass*

Handicap accessible

Convention and Auction, 2nd weekend in June

Open March thru November, Wednesday thru Saturday 1-4 p.m.  
Memberships are available • Group tours welcome • Free parking

511 Tomlinson Ave, Moundsville, WV • 304-845-9188



**Fostoria Glass Museum  
Moundsville, WV**



[www.dominos.com](http://www.dominos.com)

## PONDEROSA STEAKHOUSE

1605 Wheeling Ave. • Glen Dale, WV

Hours: Sunday -Thursday 11am - 9pm

Friday - Saturday 11am - 10 pm

Sunday Breakfast 8 am - 11 am

**To Go Service Available**



## **Marshall County Historical Society Museum**

13th & Lockwood Avenue,  
Moundsville, WV 26041



**Tours by  
Appointment  
Call  
304-845-1411  
for Details**

All the  
makings  
of a classic.



i'm lovin' it<sup>®</sup>



**McDonald's<sup>®</sup>  
of Monroe, Marshall,  
Belmont & Ohio Counties**

- Intermediate Care Facility
- Skilled Nursing Facility
- Assisted Living Facility
- Approved by Medicare, West Virginia Medicaid & Several Other Insurances
- Daily Activities & Monthly Outings



- RN, LPN & CNA Staff  
24 Hours A Day 7 Days A Week
- Offers Certified Nursing Classes
- Semi & Private Rooms Available



## Mound View Health Care, Inc.



2200 Floral Ave. • Moundsville, WV

For More Information Call Us At

**304-843-1035**



Century Mine



- **MURRAY ENERGY CORPORATION**
- **AMERICAN ENERGY CORPORATION**
- **THE OHIO VALLEY COAL COMPANY**
- **OHIOAMERICAN ENERGY INCORPORATED**
- **THE OHIO VALLEY TRANSLOADING COMPANY**

*Robert E. Murray, Founder, Chairman, President*

## BENEFITTING OUR COMMUNITIES

- Over 1,100 local high paying primary jobs, creating up to an additional 11,000 secondary jobs in the surrounding area.
- Over \$100 Million paid in annual wages and benefits.
- Over \$200 Million paid locally annually in supplies, capital expenditures, job creating infrastructure, and taxes paid to State, Federal and Local agencies.
- Totally committed to the safety of our employees.

# THE MEDC PRESENTS

## The Former

# WEST VIRGINIA PENITENTIARY

The Former West Virginia Penitentiary is a Gothic-style prison situated in the heart of historic Moundsville. This ten acre structure was the second public building constructed by the newly formed state of West Virginia after the Civil War and has been placed on the National Historic Register. It housed some of the most violent criminals in the history of the United States. The Penitentiary now serves the public by being a place for education, discovery, and entertainment.



### Do Hard Time Penitentiary Tours

Tours are held April through November  
Tuesday through Sunday 11 a.m. - 4 p.m.  
Group tours available by appointment

### Dungeon Of Horrors

Held in the Month of October  
Friday through Saturday 7 p.m. - 12 a.m.  
Sunday 7 p.m. - 11 p.m.  
Group rates available for 30 and more

### Ghost Hunts

Open for hunts March through November call for exact dates and to make reservations

### Elizabethtown Festival

Early 1800's Heritage Festival  
Held in the Month of  
September

- *Your 90 minute tour allows you to experience life on the inside of a penitentiary.*
- *Hear the eerie sounds of cell block doors slamming shut behind you.*
- *Witness "Old - Sparky", which was built by an inmate and used for executions.*
- *Look at the inmates' creations ranging from beautiful artwork to deadly weapons.*
- *Experience the confinement of a 5'x7' cell.*
- *Visit the Dungeon of Horrors where ghosts from prisoners' past haunt the prison.*

MEDC  
818 Jefferson Ave.  
Moundsville, WV 26041  
(304) 845-6200  
(304) 845-6529  
[www.WVpentours.com](http://www.WVpentours.com)

Maintained by the Moundsville Economic Development Council, a nonprofit agency



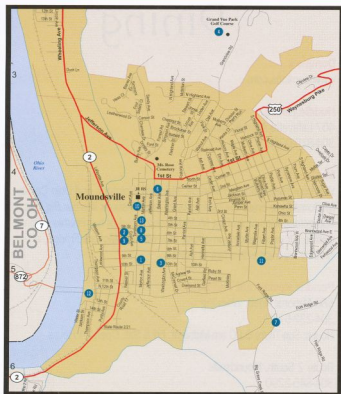


## MARSHALL COUNTY

1. Grand Vue Park
2. Mason-Dixon Line
3. Lewis-Wetzel Gravesite
4. Historic Cockayne House
5. Rosby's Rock
6. Palace of Gold
7. Marshall County Airport
8. Burches Run Wildlife Management Area
9. Dunkard Fork Wildlife Management Area
10. John Marshall High School
11. Cameron High School
12. Glen Dale to Moundsville Bike/Walking Trail
13. Valley Fork Park
14. Marshall County Fairgrounds
15. Wolf Run Lake



Maps Compliments of Marshall County Commission



## MOUNDSVILLE

- |   |   |
|---|---|
| 1. Grave Creek Mound  | 7. Valley Fork State Park                     |
| 2. Fostoria Museum  | 8. Moundsville City Building                  |
| 3. Penitentiary   | 9. Marshall County Courthouse                 |
| 4. Grand Vue Park   | 10. Business District                         |
| 5. Kirkside-Chamber of Commerce Office and Visitor's Center | 11. Marshall County Fairgrounds               |
| 6. Marx Toy Museum  | 12. Marshall County Historical Society Museum |
|   | 13. The Strand Theatre                        |



# Dining

## **Domino's**

[www.dominos.com](http://www.dominos.com)

## **Huddle House**

407 Lafayette Avenue, Moundsville  
304-810-0048

## **McDonald's**

Visit your Neighborhood Monroe, Marshall, Belmont, and Ohio County McDonald's to enjoy the classic taste combinations like our Big Mac and golden fries or an Egg McMuffin and a cup of our Premium Roast Coffee. Or experience something new with our McCafe Frappe, a creamy icy treat with a hint of coffee.

## **Perkins Restaurant and Bakery**

680 National Road, Wheeling  
304-232-5772

Hours: Sun-Thurs 6:00 am-Midnight, Fri & Sat. Open 24 Hours

Route 2 South, Moundsville  
304-845-2290

Hours: Sun.-Thurs. 6 am-11pm; Fri & Sat. 6:00 am-Midnight

Come enjoy Perkins' unique blend of delicious breakfast, lunch and dinner entrees, where each meal is created just for you! We offer a comfortable dining atmosphere that is perfect for parties and meetings, and flexible enough to offer quick in-and-out service. Bus tours are welcome, as many attractions are only minutes from either of our two convenient locations (Wheeling: I-70-, exit 2A or Moundsville: Rt. 2 South). On your next trip to Oglebay Park, Wheeling Island Gaming, Capitol Theatre, West Virginia Penitentiary or any other Ohio Valley attraction, please give us the honor of serving you. You are sure to be impressed.



### Ponderosa Steakhouse

304-845-6500

1605 Wheeling Avenue, Glen Dale

www.ponderosasteakhouse.com

### Undo's Catering

1165 Market Street, Wheeling

304-233-5566

304-233-0367 (Fax)

www.undos.com

contact@undos.com

The Sports Bar & Undo's Family Restaurants

Undo's Restaurants since 1953 now have Sports Bars located inside our restaurants featuring big screen TVs, wings, burgers and more.

Catering is available at all locations. Over the years Undo's has been a guest favorite for steaks, pasta, seafood, pizza and more. Stop and visit us at Benwood, St. Clairsville, Weirton and Elm Grove.

### Young's Cafeteria

1309 Wheeling Avenue, Glen Dale

304-845-4820



## SERVING

**Breakfast,  
Lunch & Dinner  
Anytime at  
Both Locations!**

Owned and operated  
by Carolla Ventures, Inc.



**Meeting  
Rooms  
Available**

**680 National Road  
Wheeling, WV**

**304-232-5772**

Hours: Sun. - Thurs. 6 am - Midnight  
Fri. & Sat. Open 24 hours

**Rt. 2 South  
Moundsville, WV**

**304-845-2290**

Hours: Sun. - Thurs. 6 am - 11 pm  
Fri. & Sat. 6 am - Midnight



PRABHUPADA'S  
**PALACE OF GOLD**  
 AMERICA'S TAJ MAHAL AND ROSE GARDEN

Fifty varieties of marble & onyx | Live peacocks | Lotus Pond  
 Gift Shop | Ample parking space | Wheelchair support

For a tour of the Palace, we suggest a donation of  
 \$8 for adults, \$4 for children. Bring this ad for one free tour.

Located south of Moundsville - Wheeling, off Route 250.  
 304-843-1812 [www.PalaceOfGold.com](http://www.PalaceOfGold.com)

April - August 10:00am - 8:00pm  
 September - March 10:00am - 5:00pm



*touching* **LIVES**

For more than a century, Reynolds Memorial Hospital has grown strong roots in our community. We offer the latest in medical advances and a caring staff. From high-tech skills to the simplest acts of kindness, they continue to help patients get better.

The compassionate and caring professionals at Reynolds Memorial Hospital—another reason we keep growing.

*Your choice for quality  
 community health care.*



REYNOLDS MEMORIAL HOSPITAL  
*Your Hospital For Generations.*

[www.reynoldsmemorial.com](http://www.reynoldsmemorial.com)



By all accounts, better.

**Moundsville**

910 Lafayette Avenue  
304.843.0100

**McMechen**

613 Marshall Street  
304.232.5750

[www.wesbanco.com](http://www.wesbanco.com)

WesBanco Bank, Inc. is a Member FDIC.

Since 1964



**SUN VALLEY**  
**REALTY**

Full-time realtors offering excellent service for sellers and buyers alike.  
How may we help you?

**304-845-8500** [sunvalleyrealtywv.com](http://sunvalleyrealtywv.com)

Shelly Buzzard - Broker, Realtor, GRI



**Come Join us!**

In addition to great job opportunities and career advancement, TeleTech offers great pay, full benefits after 30 days, and a fun work environment!

**Customer Service Associates**  
Full-time and Part-time



To learn more or apply, please [visit us](http://visit.us) online.

**HirePoint.com**

Or apply in person at 100 W. TeleTech Dr., Moundsville

**HirePoint**  
.com

# Services

## **Airport Limousine Service, Inc.**

180 29th Street, Wheeling  
304-232-1175 • 800-326-2907  
www.wheelinglimo.com  
email: info@wheelinglimo.com

Serving the Ohio Valley for over 40 years. Providing economical transportation to and from all major airports. Offering service for individuals or groups; share-ride or private; vans or sedans. Same-day courier service. Out-of-town medical appointments. Operating 24 hours/day, 365 days/year. Reasonable rates, dependable service.

## **Bayer Heritage Federal Credit Union**

1-800-272-6003  
www.bayerhfcu.com

Three convenient locations: Moundsville, Proctor & New Martinsville.  
Your Money, Your Choice, Your Credit Union!

## **Benwood/McMechen Housing Authorities**

2200 Marshall Street, Benwood  
304-233-0830

Affordable Housing! A great place to live. Applications for all apartment sizes, as well as our Section 8 Housing Assistance are currently being accepted. All units are equipped with whole house air conditioning. Rent based on income. Apply in person or call for more information. Equal Housing Opportunity.

## **Bonnie Dwaine Bed & Breakfast**

505 Wheeling Avenue, Glen Dale  
304-845-7250

## **Dianna's Cakes and Catering**

Rt. 88 ½ mile from Rt. 250  
304-845-5355

Offering all occasion "homestyle" catering service. Available for weddings, picnics and graduations. Let us make your occasion special.

## **Gary M. Cunningham**

Realtor & Insurance Agent  
CITYWIDE Insurance & Real Estate  
304-280-6352

## **Kittle Hauling**

803 Brown Street, Moundsville  
304-845-6630  
304-845-1921

### **Mound View Health Care, Inc.**

2200 Floral Avenue, Moundsville  
304-843-1035

Intermediate care, skilled nursing and assisted living facility. RN, LPN & CNA staff 24 hours a day, 7 day a week. Semi & private rooms available. Daily activities & monthly outings. For more information contact us.

### **Moundsville Business & Culture**

[www.discovermoundsville.com](http://www.discovermoundsville.com)

### **Marshall County Schools**

2700 Fourth Street, Moundsville  
Phone 304-843-4400 • Fax: 304-843-4409

"Children First." A long tradition of excellence in the classroom. Log on to <http://boe.Mars.k12.wv.us> for a list of our educators' achievements and information about our schools.

### **Reynolds Memorial Hospital**

800 Wheeling Avenue, Glen Dale  
304-845-3211

Offering the latest in medical advances and a caring staff. "Your Hospital for Generations." Visit our Web site for a complete listing of our services: [www.reynoldsmemorial.com](http://www.reynoldsmemorial.com).

### **Sun Valley Realty**

Shelly Buzzard, Broker, Realtor, GRI  
304-845-8500  
[sunvalleyrealtywv.com](http://sunvalleyrealtywv.com)

### **WesBanco**

Moundsville	McMechen
910 Lafayette Avenue	613 Marshall Street
304-843-0100	304-232-5750

By all accounts, better. [www.wesbanco.com](http://www.wesbanco.com)

### **Wood Rehab & Fitness**

132 North Lafayette Avenue, Moundsville  
304-845-9550 • 304-845-8452





# Cockayne Farmstead

1111 Wheeling Avenue  
Glen Dale, WV 26038



Step Back in Time  
and Visit this Intact  
Turn-of-the 20th  
Century 12-Room  
Farmhouse and its  
many Family  
Artifacts

*Group Tours Available  
By Appointment -  
Call 304-845-1411  
for Details*

**For More Information  
Visit our Website at:  
[www.cockaynefarm.com](http://www.cockaynefarm.com)**



## **Benwood**

Mayor, City Clerk, Water Department – 304-232-4320  
Police Department – 304-232-2121  
Fire Department – 304-232-0174

## **Cameron**

Mayor, City Clerk – 304-686-2366  
Police Department – 304-686-2213  
Fire Department – 304-686-2400

## **Glen Dale**

City Building – 304-845-5511

## **McMechen**

City Offices – 304-232-3140  
Police Department – 304-232-3140  
Volunteer Fire Department – 304-232-4650

## **Moundsville**

City Manager – 304-845-6300  
Clerk – 304-845-3394  
Police Department – 304-845-1611  
Fire Department – 304-845-2050  
Volunteer Fire Department – 304-845-0100

## Real Prevention. Real Change.



[www.marshallcountyfrn.com](http://www.marshallcountyfrn.com)

[www.marshallcountyantidrugcoalition.blogspot.com](http://www.marshallcountyantidrugcoalition.blogspot.com)

Phone 304-845-3300

### Mission: Restore the Strand and Build the Arts

The Strand, built in 1920 as a Vaudeville Theatre, served as a venue for live plays and variety shows and later brought to life the stars of the silver screen. The theatre closed in 1996. Although the grand curtain raising has not occurred, you can schedule tours of this historic facility.

Volunteers have organized a non-profit organization restoring the exterior and began interior renovation. Restoration has been possible with the



**The Strand Theatre**  
804 Fifth St. • Moundsville, WV  
304-845-0670  
[www.strandtheatrewv.com](http://www.strandtheatrewv.com)

### ROSEBY'S ROCK - HISTORIC HOME Dorothy Dakan Sedosky

On July 4th from Baltimore Md. heading west, the Baltimore & Ohio Railroad Company ceremoniously laid a corner stone called the First Stone six miles east of Moundsville, WV, and 1/4th mile from a community without a name, the tracks met. A golden spike was driven where the B&O came together (closed), celebrating the event.

Chiseled into The Rock (adjacent to the railroad tracks) is carved "Roseby's Rock Track closed Christmas Eve 1852" (two B's are an error). The Rock was named in honor of B&O foreman Roseby Carr. Thus Roseby's Rock became the name of the community, the location of my Historical home.

Tours are by appointment only, except when M.C. recognizes WV Day with a countrywide Open House. 304-845-2701

# Churches

## Benwood

**St. John's Catholic Church**  
622 Main St., Benwood  
304-232-6455

## Cameron

**Cameron Baptist Church**  
10 Adaline Ave., Cameron  
304-686-3301

**First Christian Church**  
North Ave., Cameron  
304-68602416

## Glen Dale

**Glen Dale United Methodist**  
700 Wheeling Ave., Glen Dale  
304-845-1140

**St. Jude Catholic Church**  
701 Jefferson Ave., Glen Dale  
304-845-2646

## McMechen

**Church of Christ**  
29 Seventh St., McMechen  
304-232-6258

**First Christian Church**  
4th & Logan Sts., McMechen  
304-232-2580

**First Church of God**  
30 Tenth St., McMechen  
304-232-6349

**McMechen-Benwood United Methodist**  
East 8th & Marshall St., McMechen  
304-232-1011

**St. James Catholic Church**  
326 Logan St., McMechen  
304-232-1227

## Moundsville

**Ash Avenue Church of God**  
Ash Ave. & Center St., Moundsville  
304-845-2732

**Calvary United Methodist**  
1601 1st St., Moundsville  
304-845-2732

**Church of Christ**  
210 Cedar Ave., Moundsville  
304-845-4940

**Church of Christ**  
4th & Willard Ave., Moundsville  
304-845-7227

**Church of the Nazarene**  
1st & Elm Ave., Moundsville  
304-845-2818

**First Christian Church**  
3rd & Grant Ave., Moundsville  
304-845-1750

**First Presbyterian Church**  
3rd & Washington Ave. Moundsville  
304-845-7155

**Messiah Lutheran Church**  
503 Lafayette Ave., Moundsville  
304-845-8764

**Moundsville Baptist**  
44th St. & Annadale, Moundsville  
304-845-5316

**Salvation Army**  
700 Jefferson Ave., Moundsville  
304-845-0510

**Simpson United Methodist**  
800 7th St., Moundsville  
304-845-5080

**St. Francis Xavier Catholic Church**  
7th & Jefferson Ave., Moundsville  
304-845-1593

**Temple Baptist SBC**  
2nd St. & Olive Ave., Moundsville  
304-845-8822

**Trinity Episcopal Church**  
Oak & Linden Ave.  
Moundsville  
304-845-5982

## Other

**Limestone Presbyterian**  
Rt. 250  
Moundsville  
304-845-8265

**Pleasant Hill United Methodist Church**  
1127 Fairmont Pike  
Wheeling  
304-233-8423

# Court House



County Commission:	304-845-0482
County Clerk:	304-845-1220
Circuit Clerk:	304-845-2130
Sheriff's Tax Office:	304-843-1400
Prosecutor:	304-845-3580
Assessor:	304-845-1490
Sheriff's Office:	304-843-1500

**WE WORK WHERE YOU WORK.  
WE LIVE WHERE YOU LIVE.**

## **BB&T**

*Best Bank In Town Since 1872*

**304-845-2470**

Member FDIC



**BAYER  
HERITAGE**  
FEDERAL CREDIT UNION

*Your Money, Your Choice, Your Credit Union!*

Contact us at one of our three convenient locations  
(Moundsville, Proctor & New Martinsville)

**1-800-272-6003**

[www.bayerhfcu.com](http://www.bayerhfcu.com)



Equal Opportunity LENDER



*Home Cooked Meals at Reasonable Prices*

**YOUNGS CAFETERIA**

*"We Do It The Old Fashion Way"*

1309 Wheeling Avenue  
Glen Dale, WV

**304-845-4820**

*ROBERT YOUNG • RICHARD YOUNG*



**WOOD**   
**REHAB and FITNESS**

132 North Lafayette Ave.  
Moundsville, WV 26041

**304-845-9550 • 304-845-8452**

*Your Complete Physical Health Facility.*

# Marshall County Schools



## “Children First”

Marshall County Schools holds a long tradition of excellence in our classrooms. Our educators' achievements rank high in state, national, and international recognition.

Look on our website for a list of many such achievements and information about our schools.

<http://boe.Mars.k12.wv.us>

Adult Learning Center	(304) 845-7890
Cameron Elementary	(304) 686-3336
Cameron High	(304) 686-3336
Center McMechen Elementary	(304) 232-6530
Central Elementary	(304) 843-4425
Gateway Achievement Center	(304) 843-4445
Glen Dale Elementary	(304) 843-4427
Hilltop Elementary	(304) 232-8640
John Marshall High	(304) 843-4444
McNinch Primary	(304) 843-4431
Moundsville Middle	(304) 843-4440
Sand Hill Elementary	(304) 547-5041
Sherrard Middle	(304) 233-3555
Washington Lands Elementary	(304) 843-4420



2700 Fourth Street

Moundsville, WV 26041

Phone: (304) 843-4400 Fax: (304) 843-4409

# West Virginia's "Biggest & Best Kept Secret"!

- 18 Hole Par 3 Golf Course
- Vacation Cabins
- Walking & Biking Trails



- Modern Banquet Hall
- (2) 18 Hole Disc Golf Courses
- 18 Hole Adventure Mini-Golf Course

- Outdoor Amphitheater
- Recreation Pool
- Splash Ground



## GRAND VUE PARK

MARSHALL COUNTY, WV

12 Miles South of Wheeling, WV Off Rt. 250

Call 304-845-9810

for more information



[www.GrandVuePark.com](http://www.GrandVuePark.com)